

CODICE / CODE / REF.:

72FT2020.07.10

MODELLO / MODEL / MODELE:

NEW EUROSKY 26/2/13 HQ

VEICOLO / VEHICLE / VEHICULE:

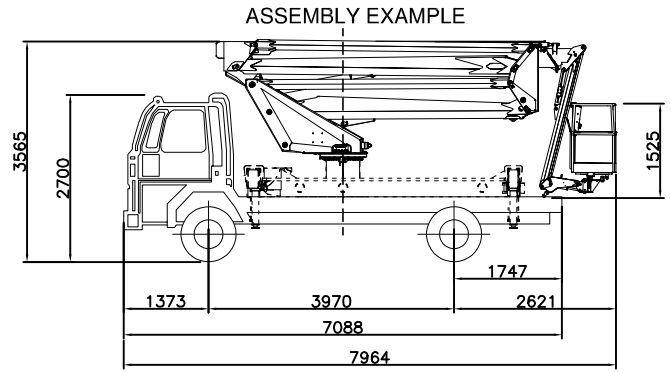
ASHOK LEYLAND ECOMET 1015 HE

PTT / GW / PTC:

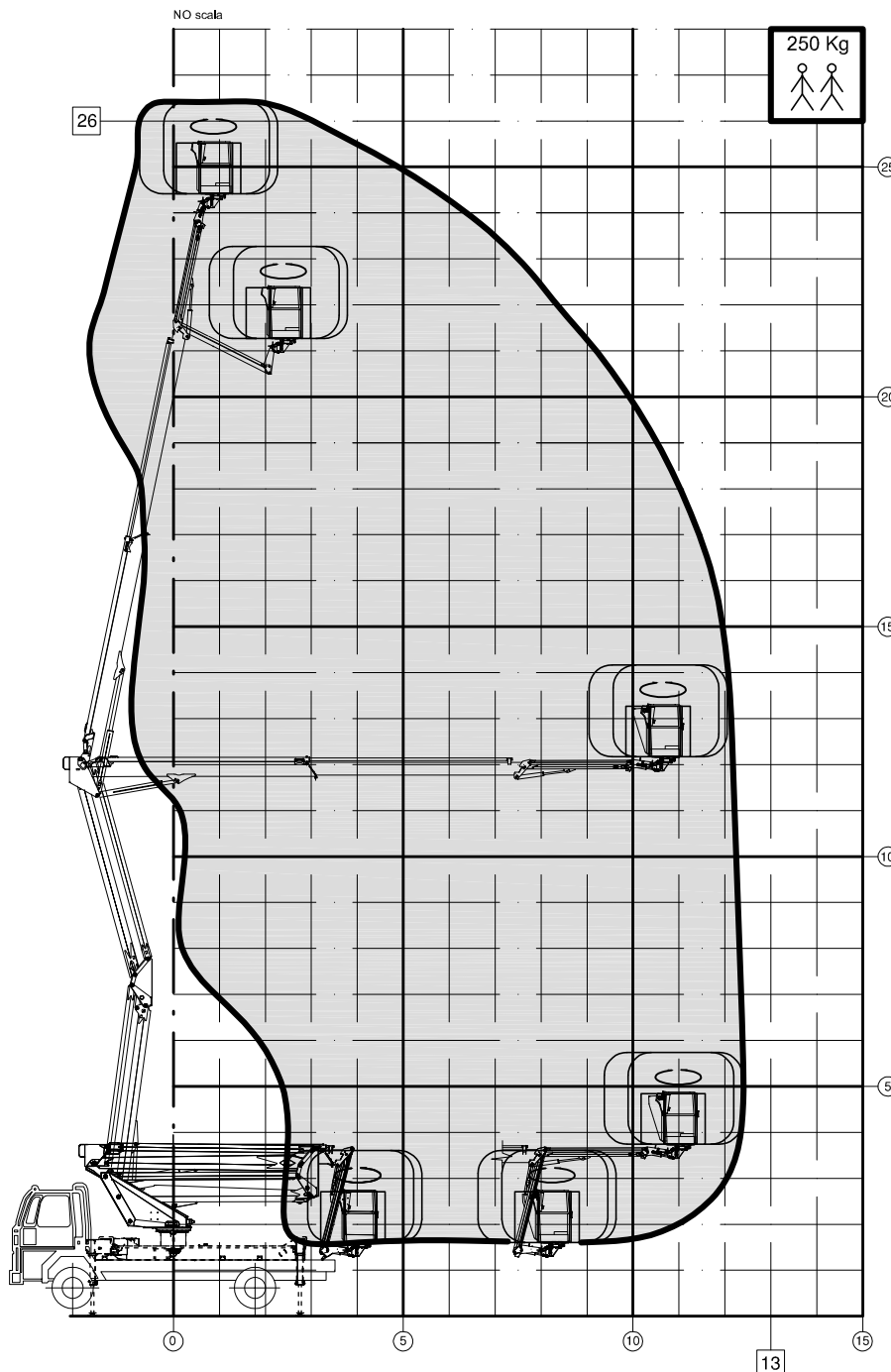
11120 kg

PASSO / WHEELBASE / EMPATT:

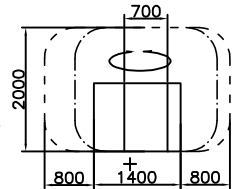
3970 mm



CO.ME.T Officine S.p.A. - si riservano il diritto di apportare modifiche in sede esecutiva senza preavviso - reserves the right to make any technical modification without notice - se réservent le droit d'apporter des modifications techniques sans préavis



Area lavoro navicella
Working area basket
Zone de travail nacelle



**CARATTERISTICHE TECNICHE
TECHNICAL FEATURES
DONNES TECHNIQUES**

Altezza di lavoro Working height Hauteur de travail		26m
Portata Working load Charge utile	P=	250 Kg
Raggio max. di lavoro Working range Etendu latérale max.		13m
Articolazione braccio superiore Upper boom articulation Articulation bras supérieur		0°+80°
Articolazione braccio inferiore Lower boom articulation Articulation bras inférieur		0°-85°
Articolazione Jib Jib articulation Articulation Jib		-15°+90°
Rotazione torretta Turret rotation Rotation de la tourelle		360°
Ciclo completo di manovra Mnoeuving complete cycle Cycle complet de manoeuvre		5.30 min
Isolamento braccio superiore Upper arm isolation Isolement du bras supérieur		-
Isolamento braccio inferiore Lower arm isolation Isolement du bras inférieur		-
Sollevamento materiale Material lifting Matériel de levage		-
Conforme in conformity with en conformité avec		CE